

# JDSU TrueSAM™

## The ultimate installation tool



T-BERD/MTS-8000, T-BERD/MTS-6000A, T-BERD/MTS-5800

### Key Benefits

- Accelerates 10 Mbps to 10 G Ethernet/IP service installation with a one-button test
- Ensures quality of service, covering all major test needs with one suite that includes J-QuickCheck™, RFC 2544, Y.1564 SAMComplete™, J-Proof Layer 2 transparency, and RFC 6349 TrueSpeed™
- Simplifies installation and troubleshooting with guided workflows that follow industry standards and best practices
- Guarantees end-customer satisfaction letting service providers experience the network the way their customers do (TrueSpeed per RFC 6349)
- Maximizes ROI with convenient software field upgrades supported on all metro platforms, T BERD®/MTS-8000, -6000A, and -5800

TrueSAM is the ultimate installation test application for the T-BERD/MTS family of Ethernet testers, combining multiple tests in one automated test suite. Based on many years of Ethernet installation experience, JDSU has combined its best-in-class test applications in one test suite employing best practices and automated workflows. Starting with the physical layer and moving up through the open systems interconnection (OSI) network model to TCP Layer 4, this installation tool

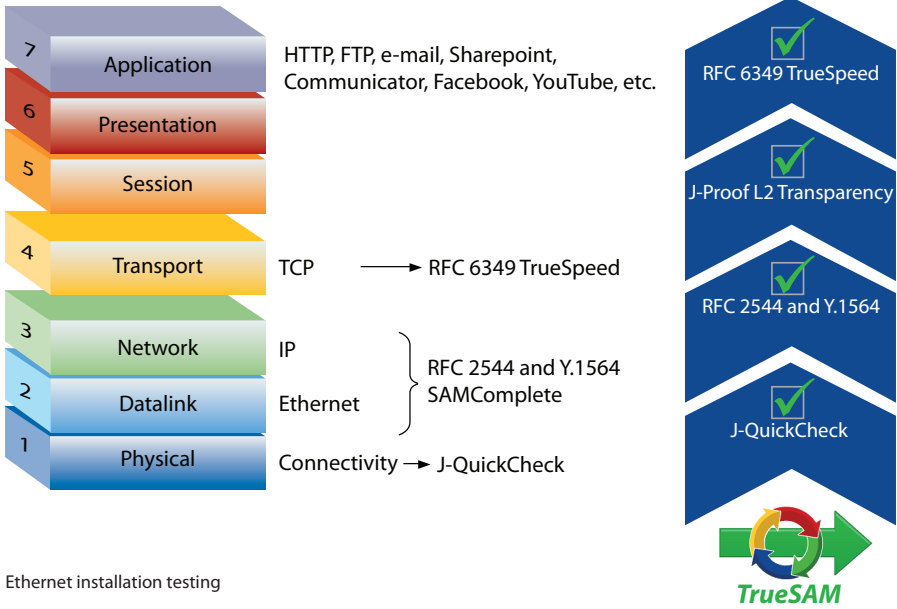
follows a logical test methodology to validate Ethernet/IP services. Based on industry standards and field-proven verification building blocks, such as J-QuickCheck, RFC 2544, SAMComplete (Y.1564), J-Proof Layer 2 Transparency, and TrueSpeed (RFC 6349), TrueSAM installation procedures can be customized to match any service offering. It streamlines service-activation workflows by completing all verification tests at the push of a button and then compiling and storing results in a single, easy-to-read report.

## TrueSAM Test Applications

Test Application	Description	T-BERD/MTS-8000 MSAM	T-BERD/MTS-6000A	T-BERD/MTS-5800
J-QuickCheck	Reduces configuration times by verifying end-to-end connectivity, including auto-negotiation settings and loop-up capability	Yes	Yes	Yes
Enhanced RFC 2544	Validates Ethernet/IP service using key performance indicators (KPIs), including throughput, frame delay, delay variation, and frame loss	Yes	Yes	Yes
Y.1564 SAMComplete	Verifies KPIs for multiple services, increasing efficiency and validating class-of-service (CoS) performance*	Yes	Yes	Yes
J-Proof	Verifies Layer 2 protocol transparency and prevents network misconfiguration	Yes	Yes	Yes

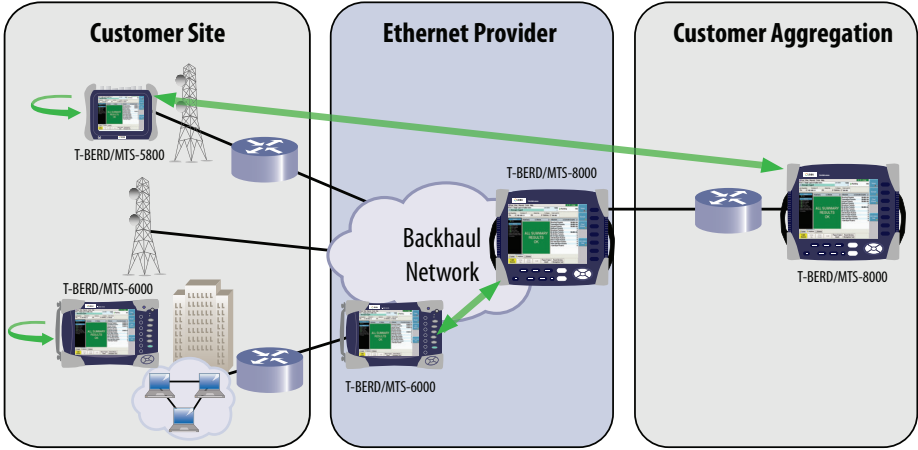
\*The initial release of TrueSAM supports Y.1564 testing of a single stream or service. Multiple-stream TrueSAM support is in candidacy for development. The existing stand-alone Y.1564 SAMComplete test supports up to 10 streams or services.

TrueSAM covers all of the necessary steps to validate Ethernet/IP services in a guided workflow to help users configure and run tests, review results, and to keep comprehensive reports. Simple pass/fail results and master/slave test set operation significantly reduces complexity and accelerates the validation process when turning up and troubleshooting a service. Following this automated standards-based test suite for each installation ensures quality and repeatability, increases customer satisfaction, and reduces OpEx.



## Use Case: Verifying end-to-end service installation

Use TrueSAM to verify Ethernet/IP circuits in mobile-backhaul networks between customer handoffs, in wireless-carrier networks from cell sites to mobile-switching offices, and for business services between customer premises. TrueSAM works the same whether the service under test is 10 Mbps or 10 G, following three easy steps to configure, run, and save a report.

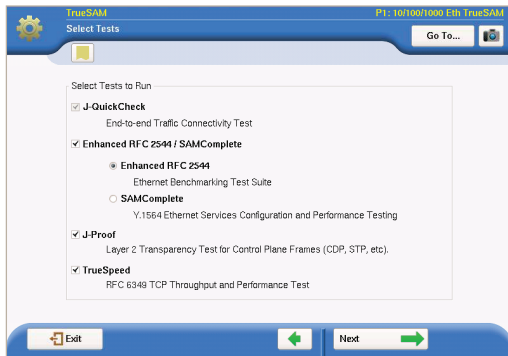


Verifying end-to-end service installation

## TrueSAM Workflow

### 1. Configure — Load profile

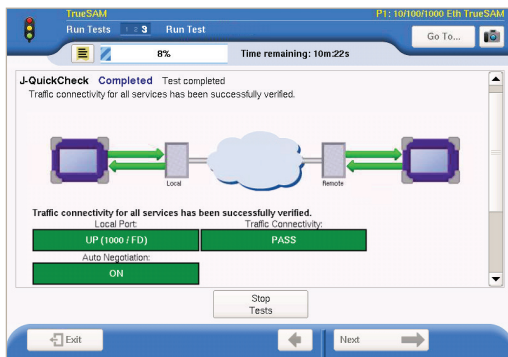
Users can define and save one test configuration profile that contains all relevant information, including network settings and the service-level agreement (SLA) criteria for the services under test, to load later at future installations.



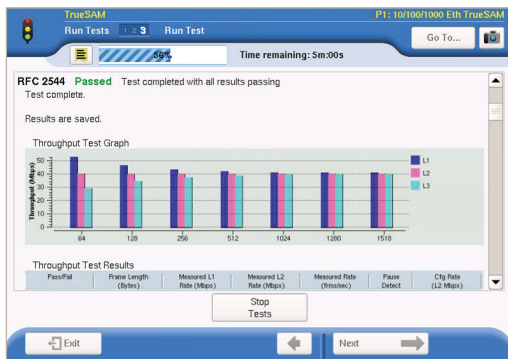
Select which tests to run.

### 2. Run tests

- J-QuickCheck to verify proper test set configurations and network settings, such as auto-negotiation and to verify far-end connectivity
- RFC 2544 or Y.1564 SAMComplete compliance tests, based on user preference, to verify Ethernet/IP service KPIs including throughput, delay, delay variation (packet jitter), and frame loss
- J-Proof Layer 2 transparency to verify that network protocols, such as CDP, are properly traveling through the network
- RFC 6349 TrueSpeed to validate TCP throughput, ensuring proper performance of bursty end-user data applications



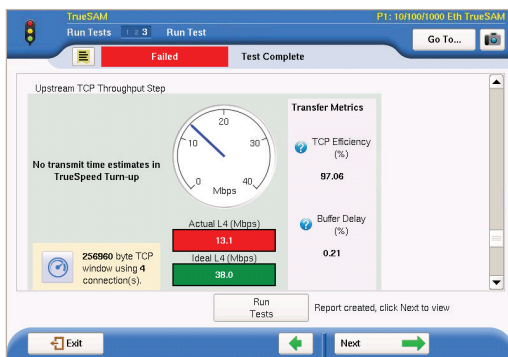
J-QuickCheck connectivity test



RFC 2544 throughput test results

### 3. Save report

In the final step, users can review simple pass/fail results and save a single detailed test report documenting SLA compliance. Test reports include graphics to easily depict the result of the overall test suite, regardless of the number of tests conducted.



TrueSpeed TCP throughput test results

## Ordering information

The TrueSAM test suite is included at no cost via a software upgrade. It requires the following software options to enable TrueSpeed Layer 4 and J-Proof Layer 2 transparency as part of the suite.

T-BERD/MTS-6000, -8000 MSAM	
Description	Part Number
Layer 2 transparency J-Proof	CTJPROOF
1 GE Layer 4 TCP/UDP	CTLSLAYER4
10 GE Layer 4 TCP/UDP	CT10GLAYER4

T-BERD/MTS-5800	
Description	Part Number
10/100/1000 Mbps and 1 GE Layer 4 TCP/UDP	CSLSLAYER4
10 GE Layer 4 TCP/UDP	CS10GLAYER4
J-Proof Layer 2 transparency	CSJPROOF



**North America**  
Tel: 1 855 ASK JDSU  
(1 855 275 5378)

**Latin America**  
Tel: +1 954 688 5660  
Fax: +1 954 345 4668

**Asia Pacific**  
Tel: +852 2892 0990  
Fax: +852 2892 0770

**EMEA**  
Tel: +49 7121 86 2222  
Fax: +49 7172 86 1222

[www.jdsu.com/nse](http://www.jdsu.com/nse)